



AMERICAN  

---

CRESCENT

ELEVATOR MANUFACTURING



AMERICA'S  
RESIDENCE  
ELEVATOR

ESTABLISHED 1985

310 STEPHENS ST.

PICAYUNE MS 39466

Toll Free: 800-748-9711

Phone: 601-798-9392 Fax: 601-798-9444

[rc@americancrescent.com](mailto:rc@americancrescent.com)

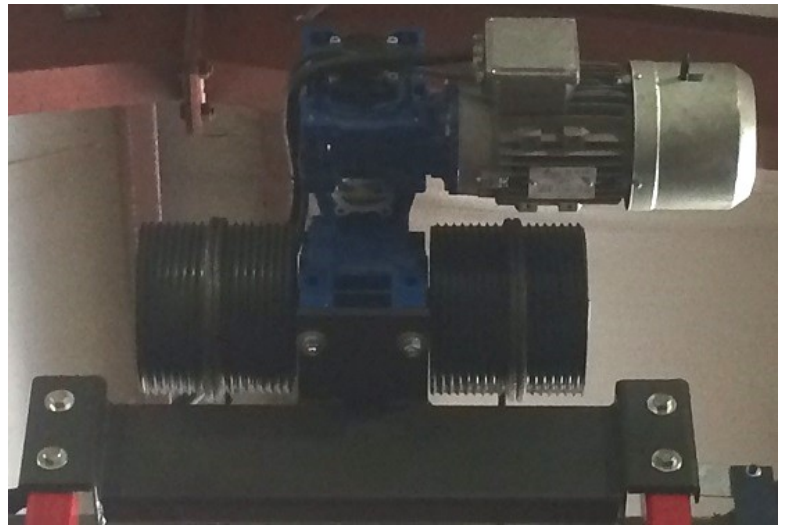
[www.americancrescent.com](http://www.americancrescent.com)

**STANDARD FEATURES INCLUDE:**

- \* 2-YEAR LIMITED WARRANTY
- \* 750 LB. CAPACITY—12 SQ. FT. PLATFORM OR 950 LB. CAPACITY—15 SQ. FT. PLATFORM
- \* 2-SPEED OPERATION WITH AUTOMATIC 2-WAY LEVELING
- \* 3/4" OAK OR BIRCH VENEER
- \* STAIN AND URETHANE FINISHES
- \* 1 1/2" DIAMETER MATCHING HANDRAIL
- \* VINYL FINISH FOLDING CAR DOOR WITH 3 CLEAR ACRYLIC FULL LENGTH VISION PANELS
- \* REMOTE POWER UNIT LOCATION
- \* MICROPROCESSOR CONTROL WITH MAGNETIC SELECTOR
- \* MOMENTARY PUSHBUTTON OPERATION WITH BRAILLE
- \* APPROVED HOISTWAY DOOR INTERLOCKS WITH ACCESS KEY
- \* INSTANTANEOUS CAR SAFETY DEVICE
- \* EMERGENCY BATTERY-POWERED LOWERING AND LIGHTING WITH ALARM
- \* ELECTRIC ALARM SIGNAL AND PUSHBUTTON
- \* FULL FUNCTION TOUCH BUTTON PHONE
- \* MEETS OR EXCEEDS ANSI A17.1 NATIONAL SAFETY CODE
- \* PRE-WIRED ELEVATOR PACKAGE

**OPTIONAL SELECTIONS:**

- \* KEYED SECURITY OPERATION
- \* OPPOSITE OR ADJACENT OPENINGS
- \* CAR HEIGHTS TO 8'-0"
- \* HARDWOOD FLOORING
- \* LAMINATED GLASS CAR PANELS
- \* ARCHITECTURAL DOWN LIGHTING
- \* CAR POSITION INDICATORS



<b>CAB MODELS</b>				
<b>Sierra</b>	<b>Executive</b>	<b>Presidential</b>	<b>Plantation</b>	<b>Salle De Verre</b>
<p><b><u>Standard Features:</u></b></p> <ul style="list-style-type: none"> <li>◆ Cabinet grade veneer or plastic laminate wall</li> <li>◆ Unfinished floor</li> <li>◆ Bronze or stainless steel #4 fixtures with matching trim</li> </ul>	<p><b><u>Standard Features:</u></b></p> <ul style="list-style-type: none"> <li>◆ Solid hardwood raised panel walls</li> <li>◆ Bronze or stainless steel #4 fixtures with matching trim</li> <li>◆ Matching hardwood floor</li> </ul>	<p><b><u>Standard Features:</u></b></p> <ul style="list-style-type: none"> <li>◆ Solid hardwood raised panel walls</li> <li>◆ Glass panel for the side or rear walls</li> <li>◆ Bronze or Stainless steel #4 fixture with matching trim</li> <li>◆ Matching hardwood floor</li> </ul>	<p><b><u>Standard Features:</u></b></p> <ul style="list-style-type: none"> <li>◆ Raised wall panels painted glossy white</li> <li>◆ Bronzed or stainless steel #4 fixtures with matching trim</li> <li>◆ Matching hardwood floor</li> </ul>	<p><b><u>Standard Features:</u></b></p> <ul style="list-style-type: none"> <li>◆ Glass walls captured by aluminum glazing</li> <li>◆ Stainless steel #4 fixture</li> <li>◆ All clear car gate</li> </ul>

America's Residence Elevator has the convenience of fitting in limited spaces. If you have approximately 20 square feet, our residence lift will meet your minimal hoist way requirements.

Delivery of our package requires approximately 4 weeks from receipt of approved submittals. If we can help fill your needs with our residence package, please call us toll free at (800) 748-9711.



#### **Power Unit:**

American Crescent Elevator Mfg. has two of the finest elevator drive systems to choose from.

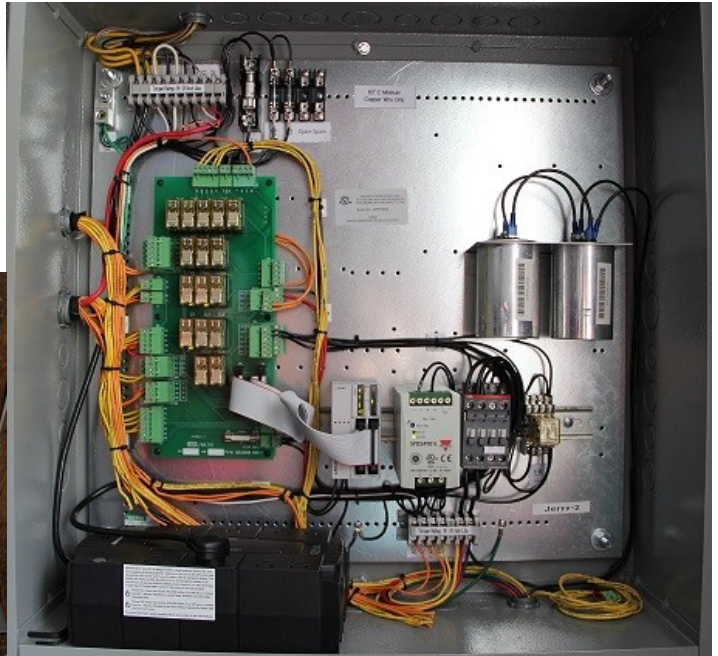
- ◆ A machine room-less (MRL) V.V.VF winding drum. The M.R.L. is ideal when you don't have extra room for drive equipment.
- ◆ Holeless rope hydraulic has the sheer power to carry everything you need with a smooth quiet ride (small machine room re-

#### **Control:**

Shall be momentary pressure, single automatic call/dispatch type, microprocessor based. The car shall be called via a single call button, or key switch at each floor, or dispatched from the car station. The car station shall contain labeled pushbuttons for each floor served, and emergency stop button, an alarm button, and a car light switch.

#### **Guide Rails:**

Shall be two steel members with smooth splices, located on one side of the hoist way to accurately guide the car and piston, secured to the hoist way wall by suitable brackets and hardware.



#### **Cables:**

Shall be two 3/8" diameter, 8 x 19 traction steel, each with ultimate strength of 8200 lbs.

#### **Door Locks:**

Combination unit system contact and lock shall be furnished for each hoist way entrance. Locking device shall prevent elevator operation unless doors are closed and prevent opening of doors when car is not at landing.

#### **Hoist Way (Work by Other):**

A suitable hoist way conforming to local building code. A 220 volt, single phase, 60 Hz. Power terminated in a fused disconnect switch, located adjacent to the elevator controller. A separate 115 volt circuit for car lighting to be supplied. Hoist way entrance doors with suitable latch set. Telephone in car connected to outside exchange.



**SALLE DE VERRE CAB**





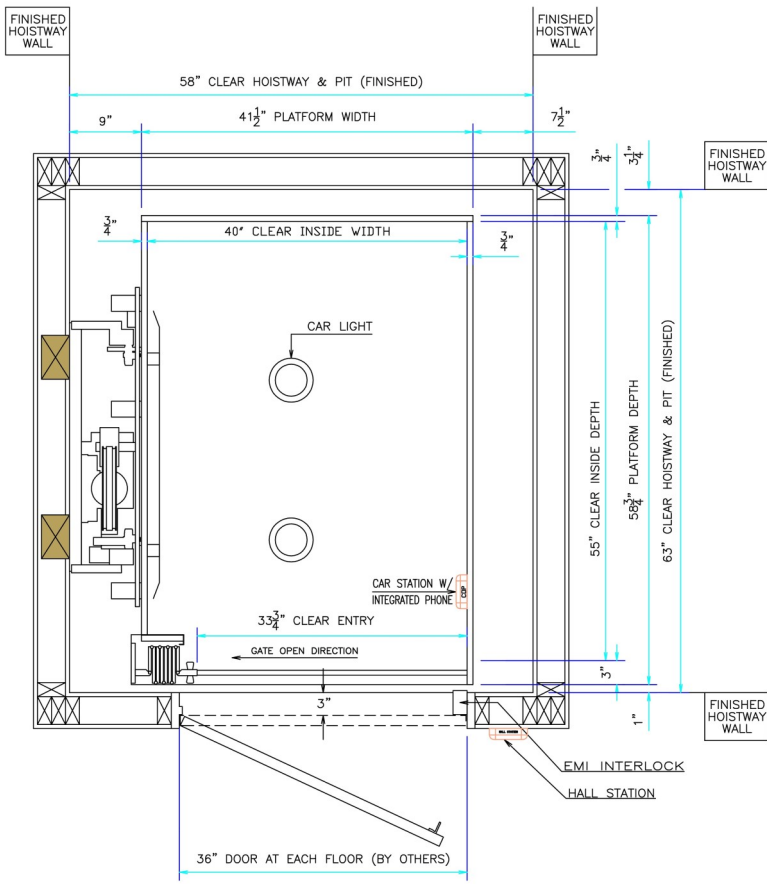
P  
R  
E  
S  
I  
D  
E  
N  
T  
I  
A  
L



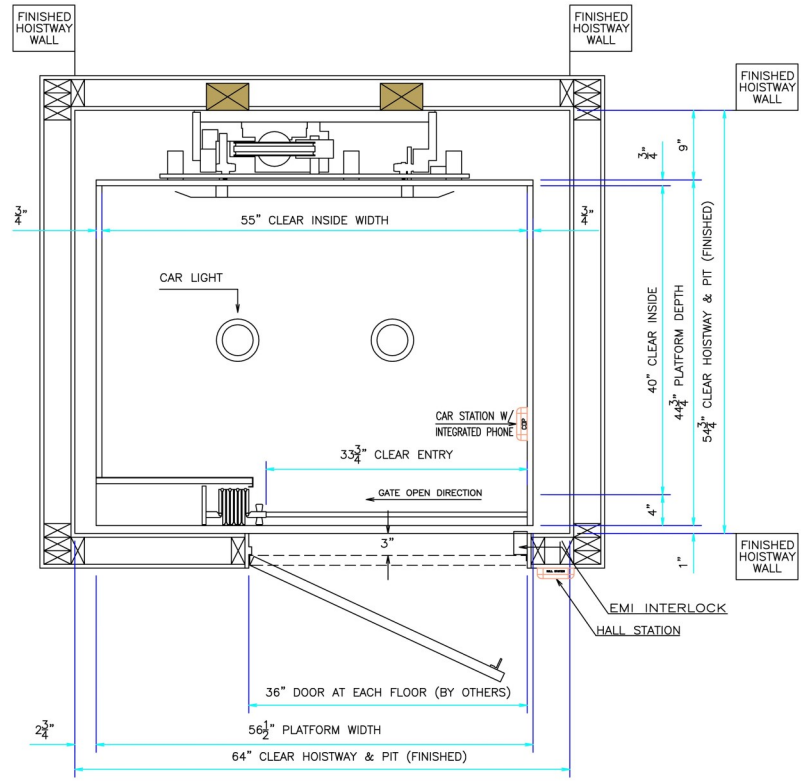
P  
L  
A  
N  
T  
A  
T  
I  
O  
N

E  
X  
E  
C  
U  
T  
I  
V  
E

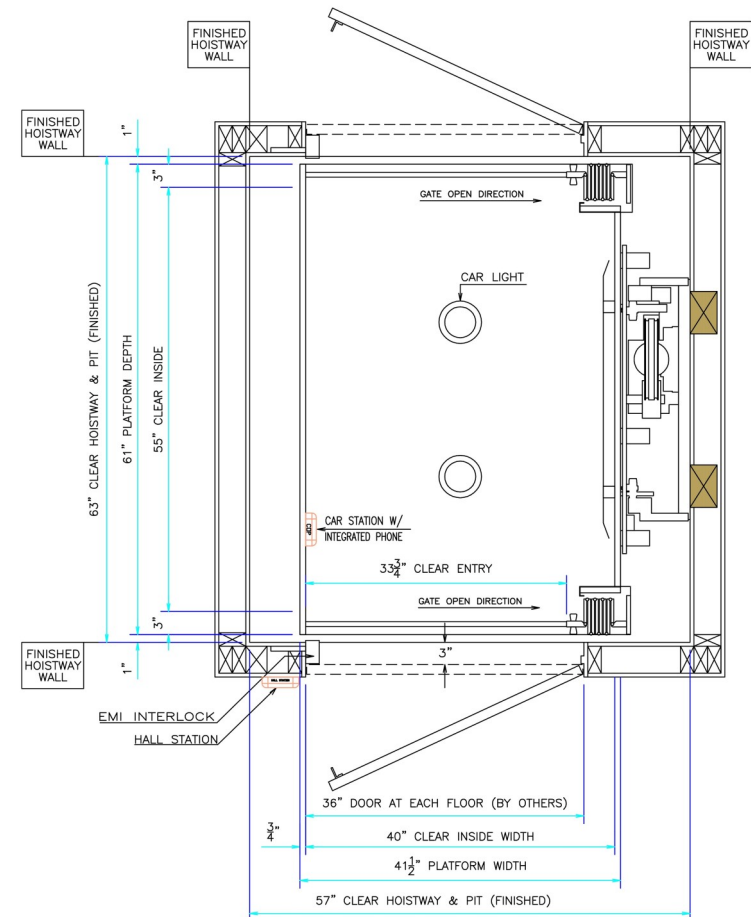




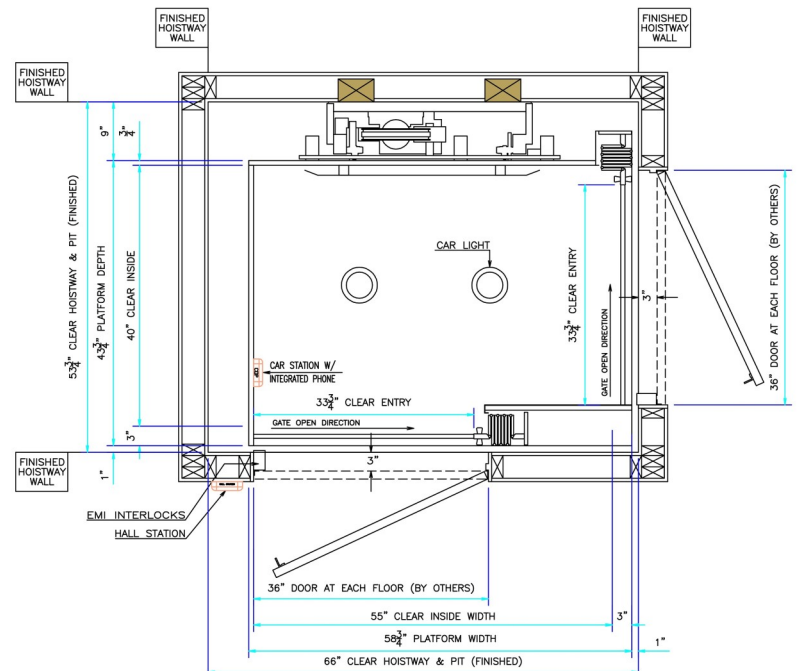
A Style Cab: 950 40" X 55" Clear Inside



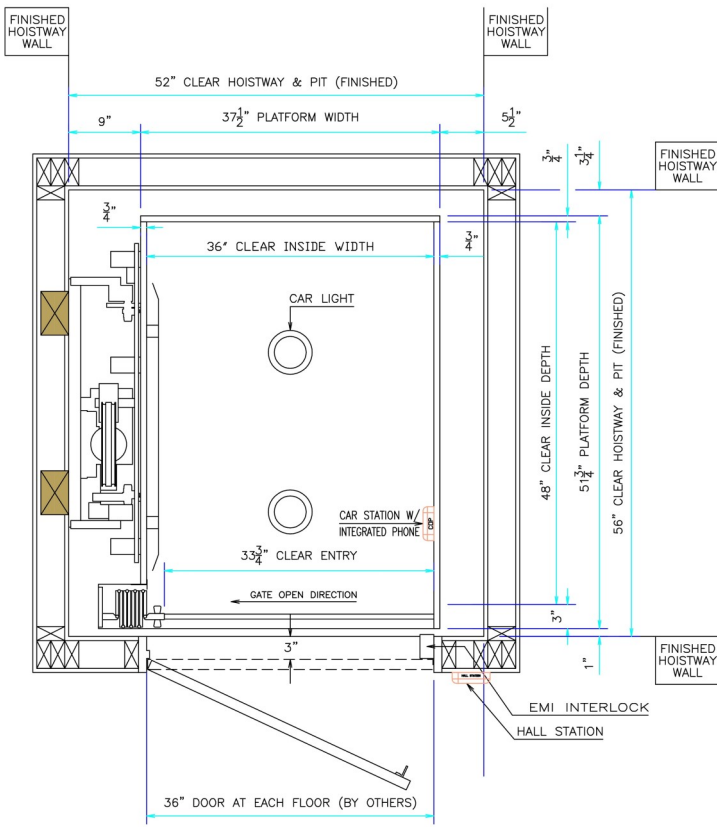
B Style Cab: 950 55" X 40" Clear Inside



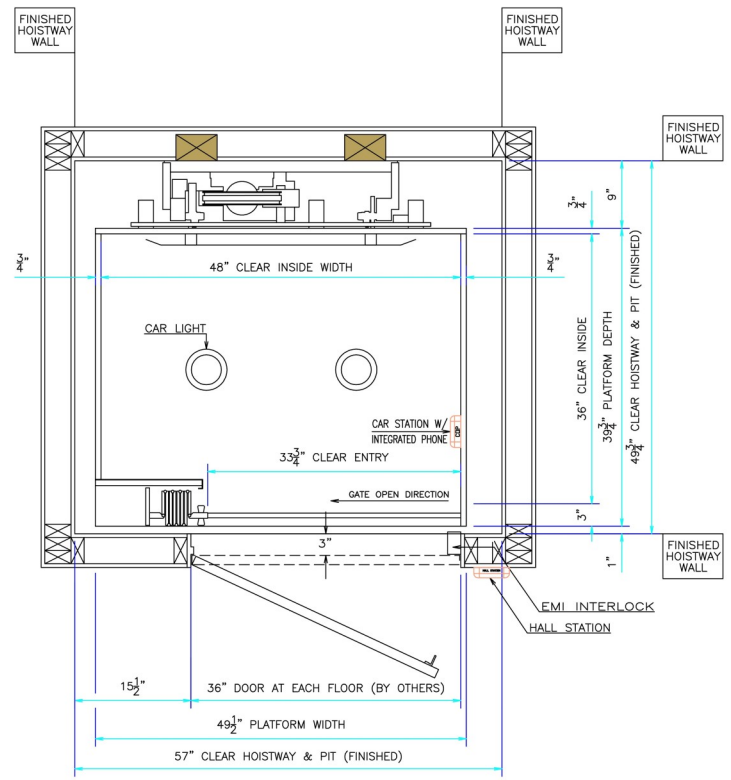
C Style Cab: 950 40" X 55" Clear Inside



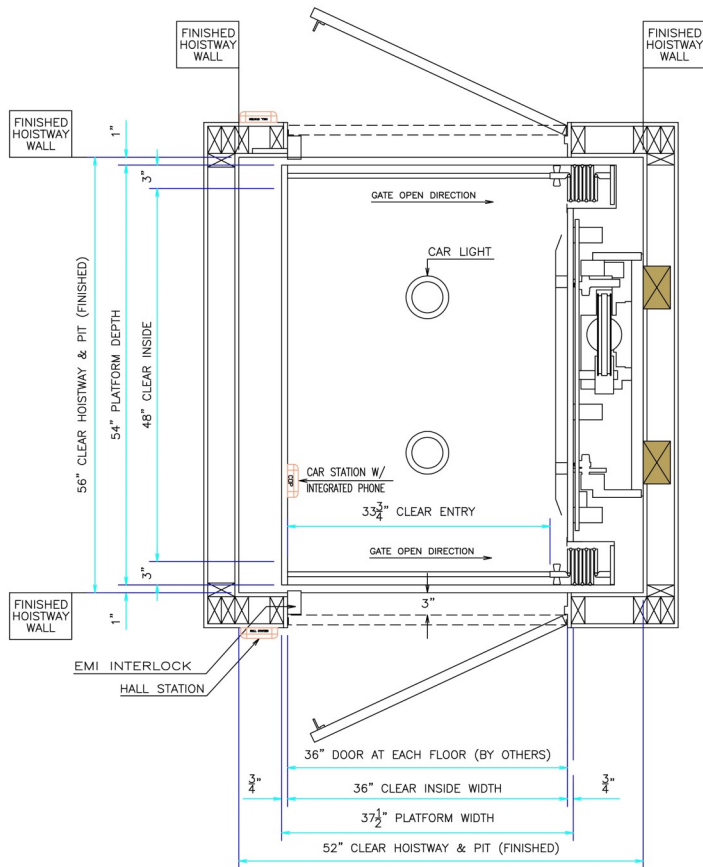
D Style Cab: 950 55" X 40" Clear Inside



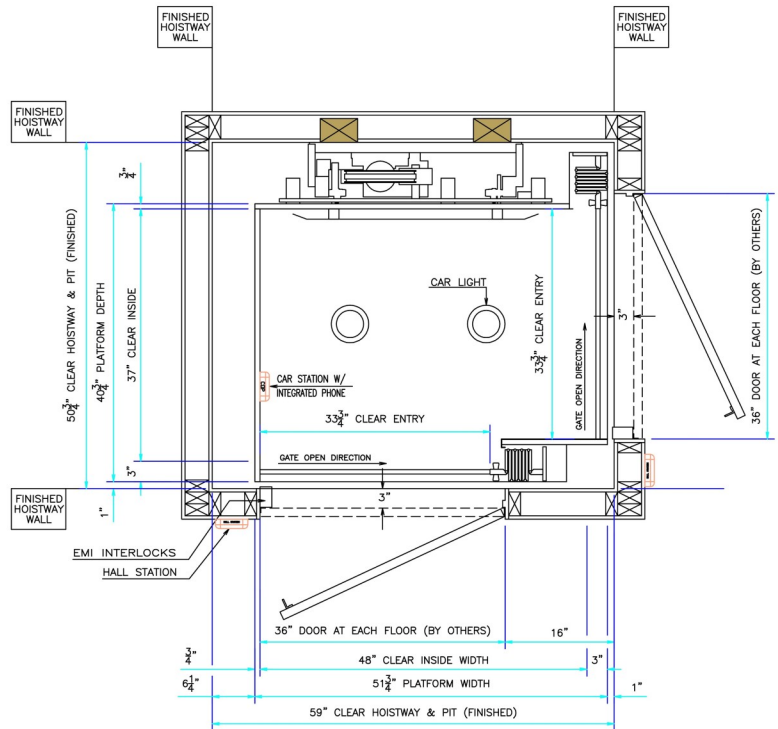
A Style Cab: 950 36" X 48" Clear Inside



B Style Cab: 950 48" X 36" Clear Inside



C Style Cab: 950 36" X 48" Clear Inside



D Style Cab: 950 48" X 37" Clear Inside

All hoist way dimensions shown are for standard folding car gate. For automatic or manual wrap around gates consult factory for hoist way dimensions. All plans require a minimum pit depth of 8" and a minimum clear overhead of 8'-0"

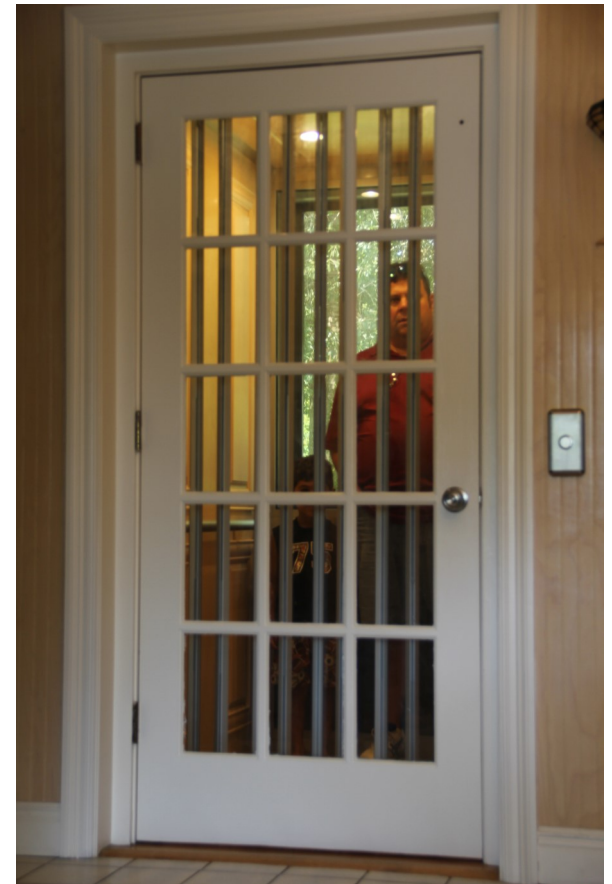
# ABOUT US

---

## A Brief History

American Crescent Elevator Corp. was established in Sept. 1976 when American Elevator (Est. 1908) and Crescent City Elevator (Est. 1973) were merged to form American Crescent Elevator Corporation. In 1985 American Crescent Elevator Manufacturing Corporation was established to provide equipment to distributors on a nationwide basis.

Since that time we have provided equipment to approximately 100 elevator companies including the major elevator suppliers. We have supplied elevators for all branches of the Federal Government, including V.A. Hospitals.



**OUR ELEVATORS MEET OR EXCEED ALL SAFETY  
REQUIREMENTS SPECIFIED BY ANSI A17.1 PART XXV CODE**

## An Invitation

We hope this introduction has given you some insight on our organization and will allow you too look favorably at our product. We would like to invite you to visit our plant in Picayune, Mississippi any time you are in the area.

If we can be of any assistance on your future projects, please do not hesitate to contact Craig Catoire at [cmc@americancrescent.com](mailto:cmc@americancrescent.com) or Ryan Catoire at [rc@americancrescent.com](mailto:rc@americancrescent.com) or by phone at 800-748-9711.