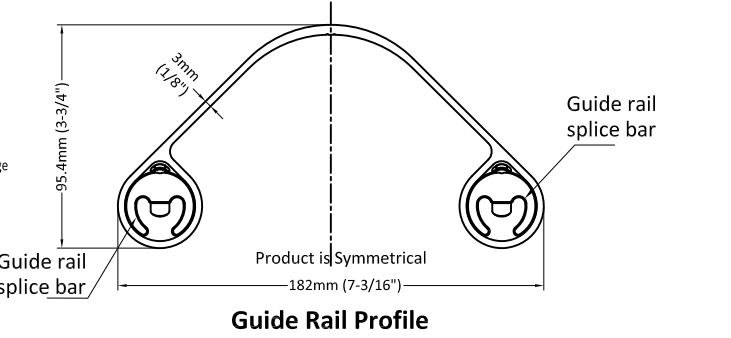
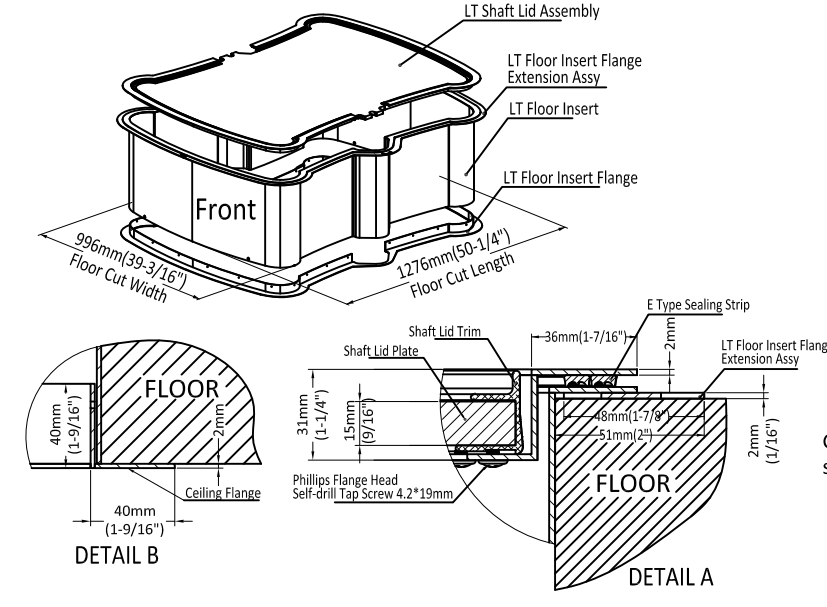
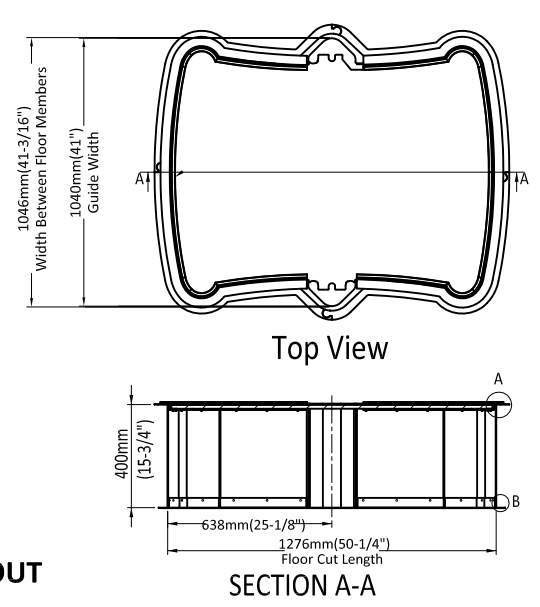
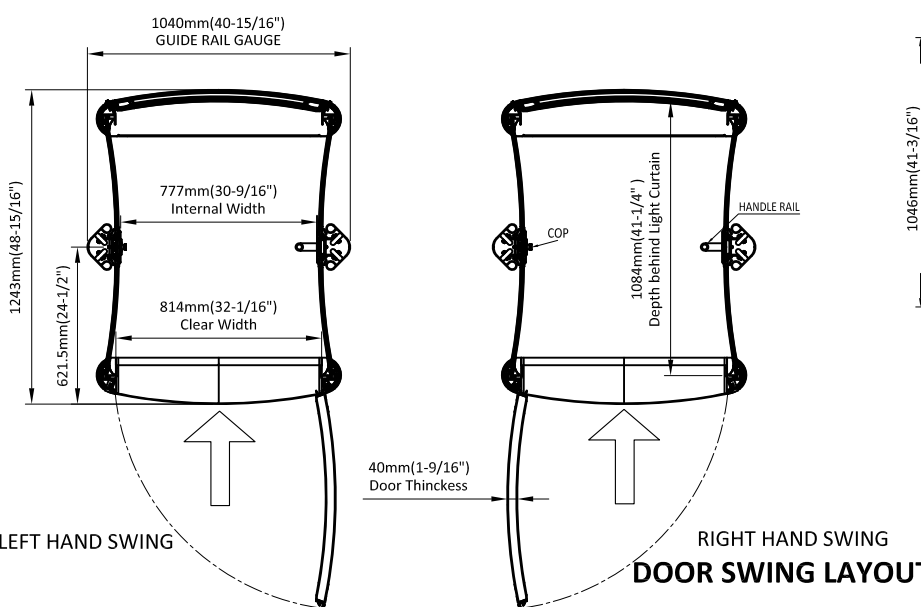
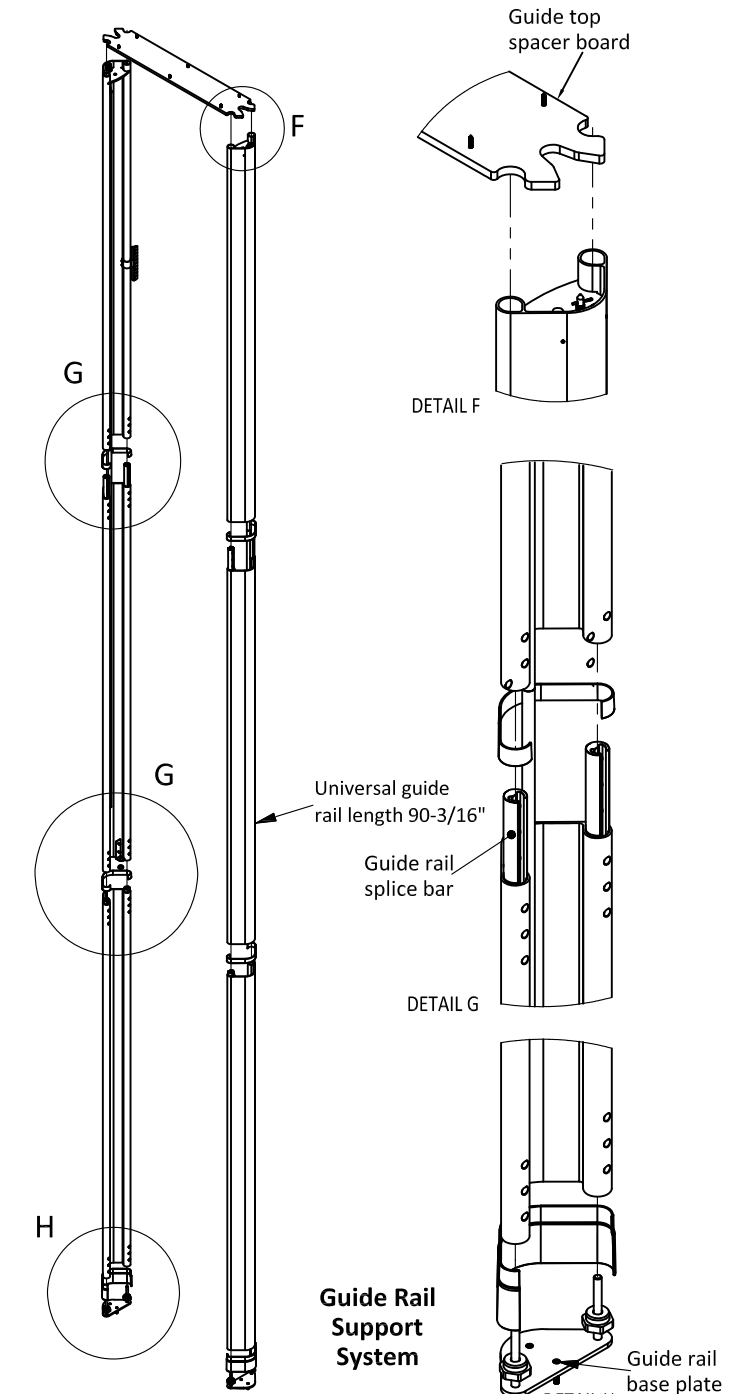
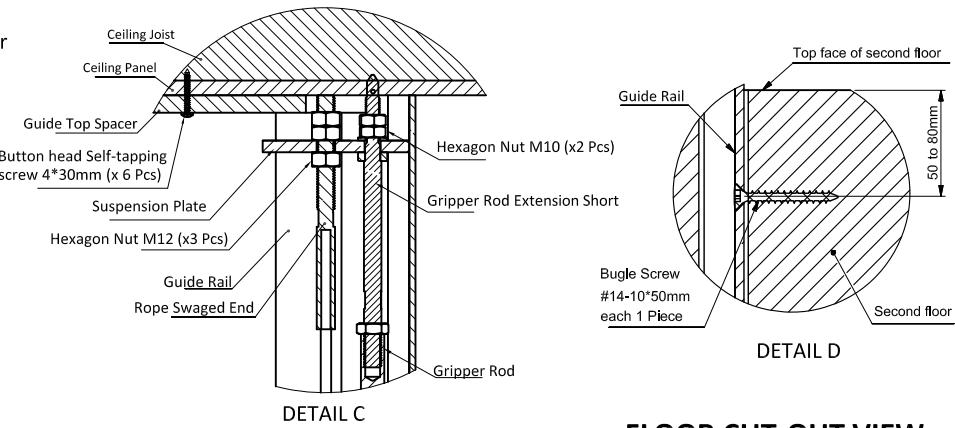
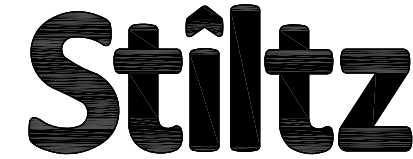


GENERAL DATA		MACHINE EQUIPMENT	
Type:	Trio Homelift	Manufacturer:	Nord Gear Ltd
Capacity:	484 lbs.	Type:	SK9016.1 VL-80S/4 BRE10 HL SR OL/H (Bevel gear unit)
Speed:	21.7 ft/min	Motor Power:	0.55 kW
Maximum travel:	13.12 ft	Output Speed:	1375 / 15 rpm
Car floor area:	11.1 sq ft	Reduction:	02-37.0
Landings:	2	Output Torque:	339 Nm
Car entrances:	1 in-line	Brake torque, manufacturer:	10 Nm: Precima
Operation:	Constant pressure	Drum, manufacturer:	Shanghai Hanzhou Machinery and Equipment Co., Ltd
		Material:	Cast Iron
		Diameter:	7.874 in (200mm)
		Diverter pulley, manufacturer:	YanZhou Saierda Nylon manufacture Co. Ltd
		Material:	Nylon
		Quantity:	2
LIFT WEIGHT		ELECTRICAL	
Hoist unit (machine room above car):	237.6 lbs.	Main power:	220-1-60 HZ - 20 AMP
Car body:	202.4 lbs.	Signal voltage:	24 VDC
Total empty lift:	440 lbs.	Emergency lowering system:	Battery 12 V - 7 AMP, with emergency lighting
		PLC, manufacturer:	Mitsubishi
		Type:	AL2-24MR-D
		VFD, manufacturer:	Nord
		Type:	SK 500E-750-323-A
SUSPENSION ROPES		SIGNAL/SAFETY FEATURES	
Manufacturer:	Pfeifer Drako	Landing controls:	Remote transmitters hold-to-run buttons, with back lights
Type:	Drako 7 x 19 WSC (Mil Spec 83420)	Car controls:	Hold-to-run call buttons, with back lights
Dimensions:	0.2362 in (6mm)	On/off and reset switch:	Keypad on car operating panel
Min. breaking force:	29.0 kN	Emergency stop:	Push emergency stop switch with alarm siren
		Emergency signalling device:	Two way voice communication telephone, to landline
		Car indicator lights:	Over-speed, over-load, out-of-balance, bottom-top obstruction
		Car Lighting:	LED strip lighting in ceiling and LED puck lighting cab floor
		Top of car/machine room:	Load sensitive top plate above lift
		Bottom of car:	Obstruction sensor pad at base of lift car
GUIDE RAILS		APPLIED COMPONENTS	
Manufacturer:	Stiltz	Safety gear, manufacturer, type:	Stiltz, mechanical gripper plates and rods
Type:	Specific Aluminium Alloy (AA 6063) extrusion	Car door lock, manufacturer, type:	Stiltz (Kunshan) Limited, ES 20M
Size:	Overall depth 7.165 in, width 3.756 in	UL certificate:	102448987CRT-001
		Car door contact, manufacturer, type:	Kronenberg, PZ 73
		UL certificate:	20141104-SA34041
		Machine brake, manufacturer, type:	Precima
		UL certificate:	1478630
		Car door lock, manufacturer, type:	Stiltz (Kunshan) Limited, ES 20M
		Car door contact, manufacturer, type:	Kronenberg, PZ 73



The information contained herein is the exclusive property of Stiltz Ltd. and shall not be distributed, reproduced, or disclosed in whole or in part without prior written permission of Stiltz Ltd.



© Stiltz Ltd. 2013	TITLE	Lifton Trio ASME Installation Layout	
Drawn Wagon.Wang Date 2018/05/08	A3	Dwg No	PAGE
THIRD ANGLE PROJECTION - AS 1100	SCALE:		1 OF 1